

The Ashley River in Baxter Village

3 or 4 bedrooms / 2.5 - 3.5 Bath
2600 - 2975 sf Approx



Elevation shown with optional Children's Retreat and Fourth Bedroom.
Attached garage option is available.

Lots of Options for Your Family

A Dilworth Collection Home

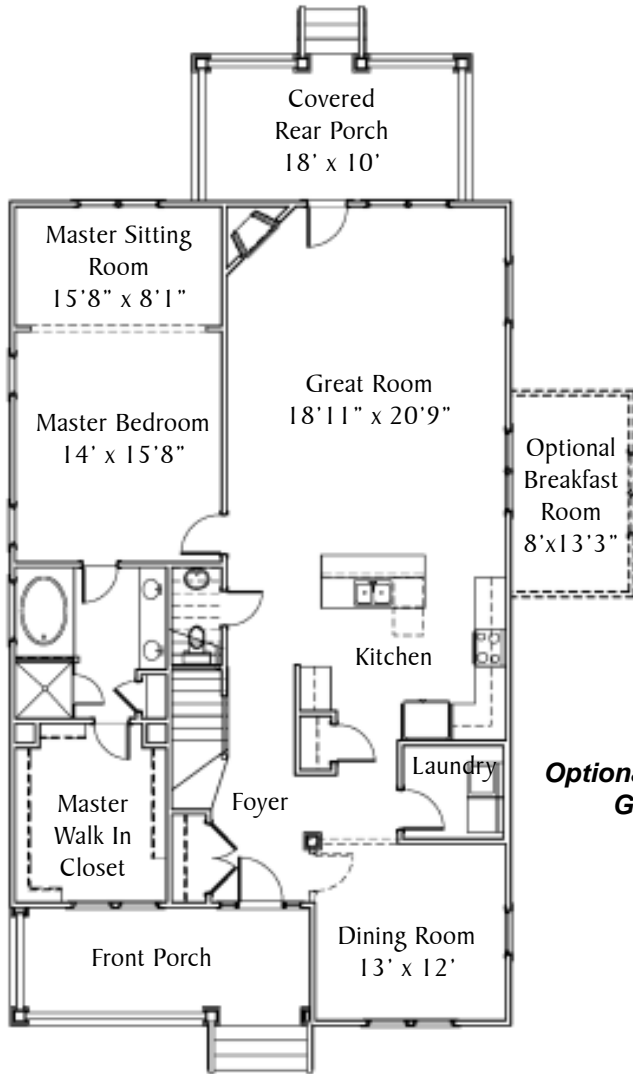
- Garden Tub, dual vanities and tile shower
- Hand sanded hardwood flooring
- Large Kitchen Open to Great Room with Island Seating
- Moen Bath Faucets, GE Appliances
- Tile flooring in all baths and Laundry Room
- Granite Countertop in Kitchen
- High Performance Low E Windows
- Large Master Walk-in Closet
- Covered Rear Porch
- Raised Ceilings throughout
- Gas Fireplace in Great Room
- Detached Garage and Optional Attached Garage

3 or 4 Bedroom Options

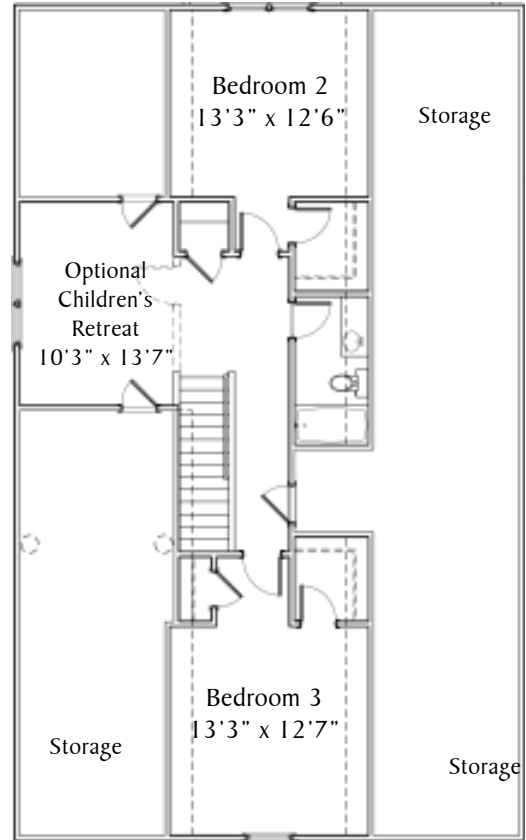
Master on the Main Level

Covered Rear Porch

**Detached Two Car Garage in
Rear Yard Included**

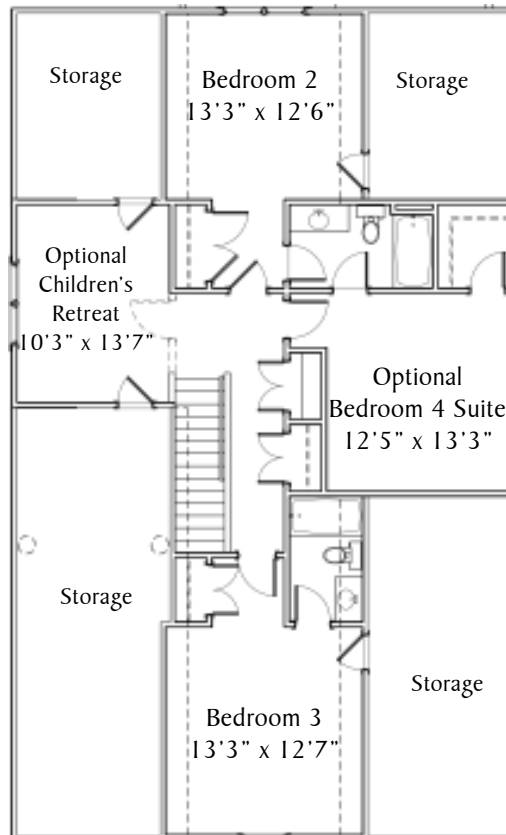


Ashley River Main Level



**Ashley River Upper Level with
Optional Children's Retreat**

**Ashley River Upper Level
4 Bedroom Option**



Evans Coghill Homes

Steve Risser, CSP
srisser@evanscoghill.com
704.277.6590