

## The Winyah Bay in Baxter Village

3 or 4 bedrooms / 2 Bath  
2500 sf Approx

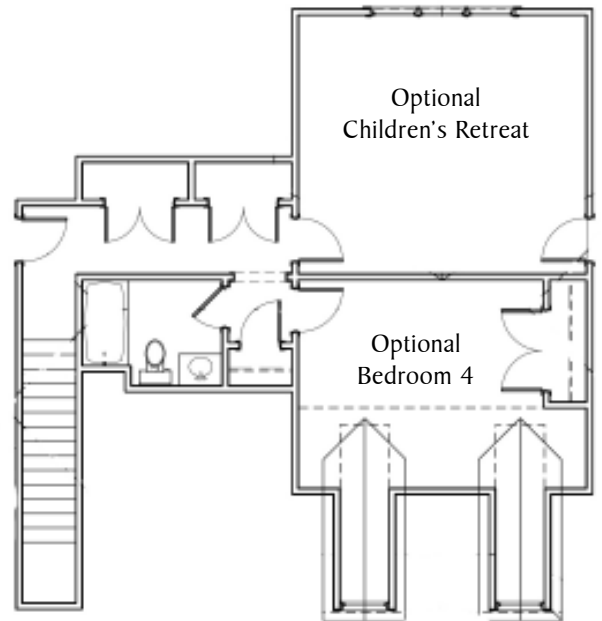
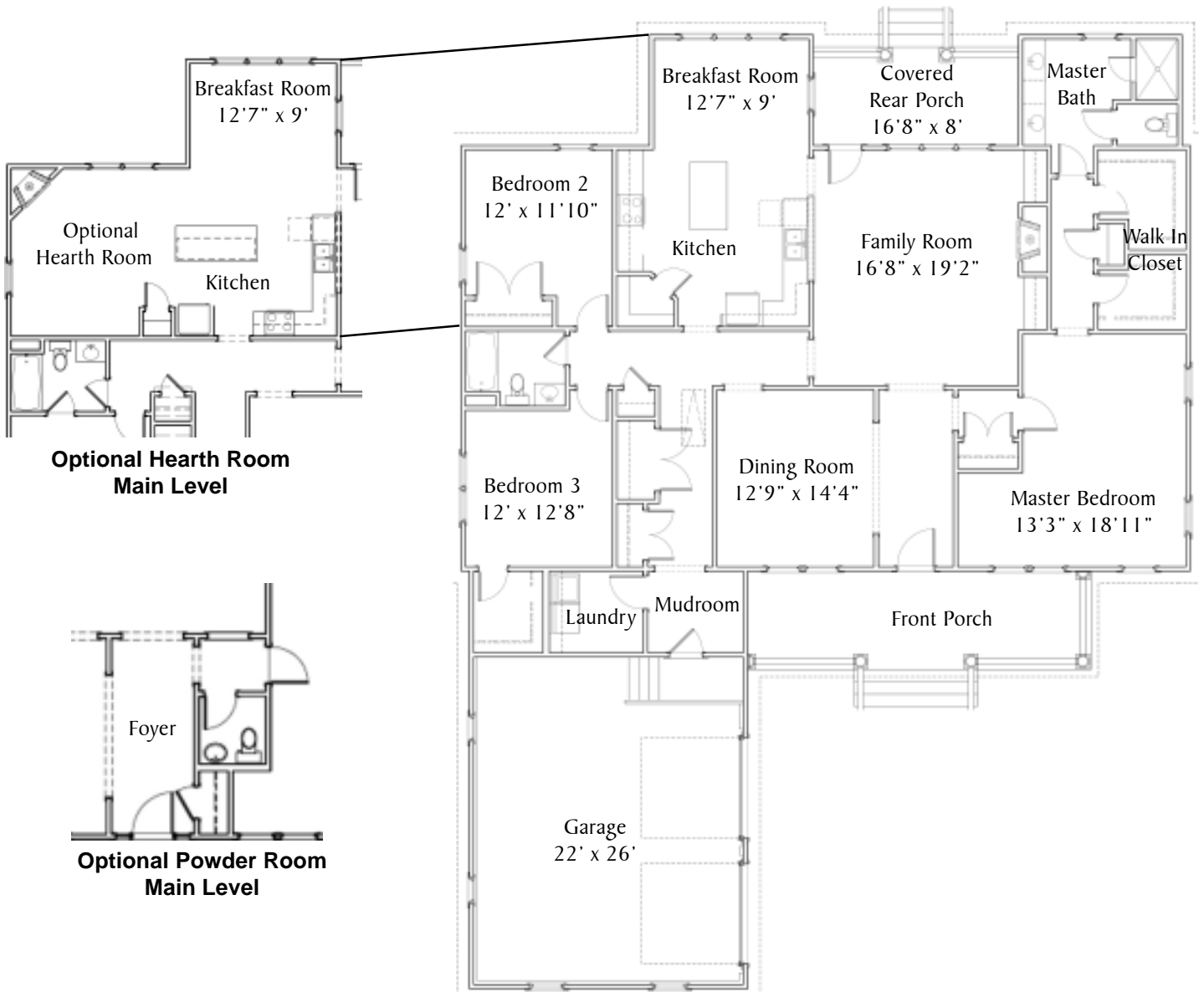


### A Fabulous Ranch Home Plan

A Dilworth Collection Home

- Oversized Motor Court Garage
- Hand Sanded Hardwood Flooring
- Large Kitchen Open to Great Room with Island Seating
- Moen Faucets, GE Appliances
- Tile flooring in all baths
- Granite Countertop in Kitchen
- High Performance Low E Windows
- His and Hers Closets in Master
- Covered Rear Porch
- Separate Laundry with Tile Floor
- 9 ft Ceilings throughout
- Gas Fireplace in Great Room





**Winyah Bay Optional Upper Level**



**Evans Coghill Homes**

Alan Banks  
 BaxterVillage@evanscoghill.com  
 803.548.4588