

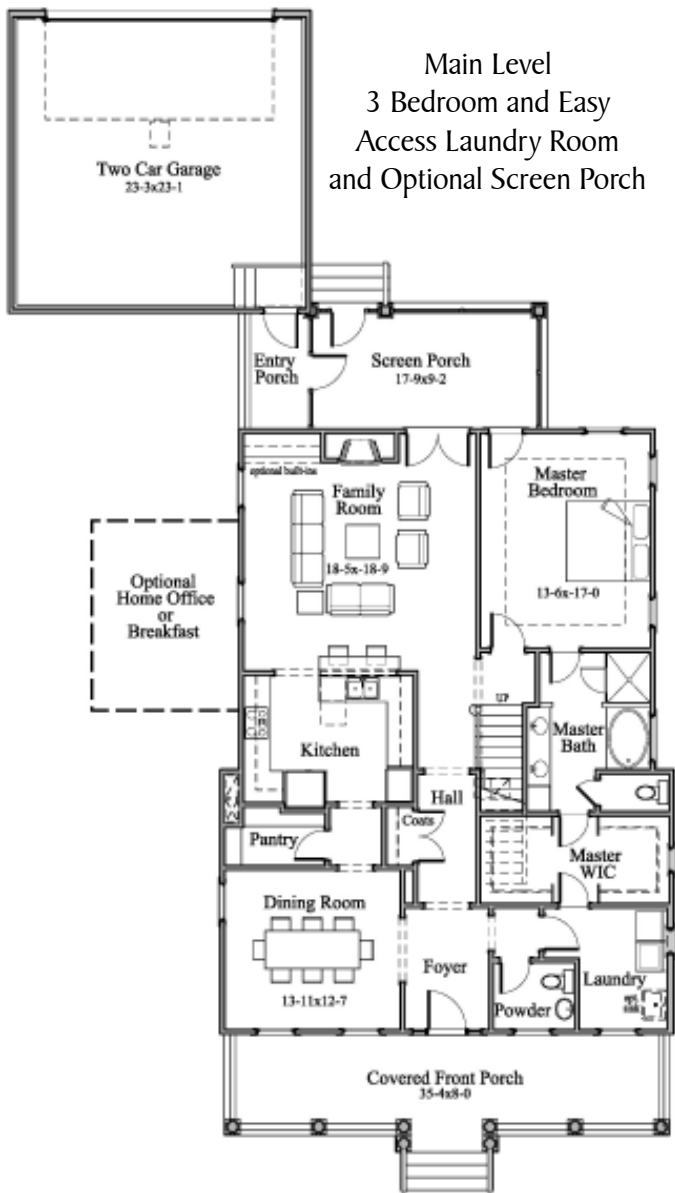
The Sweetgrass in Baxter Village

3 or 4 Bedroom / 3 or 3.5 Bath
2500 to 2900 Approx Sq Ft

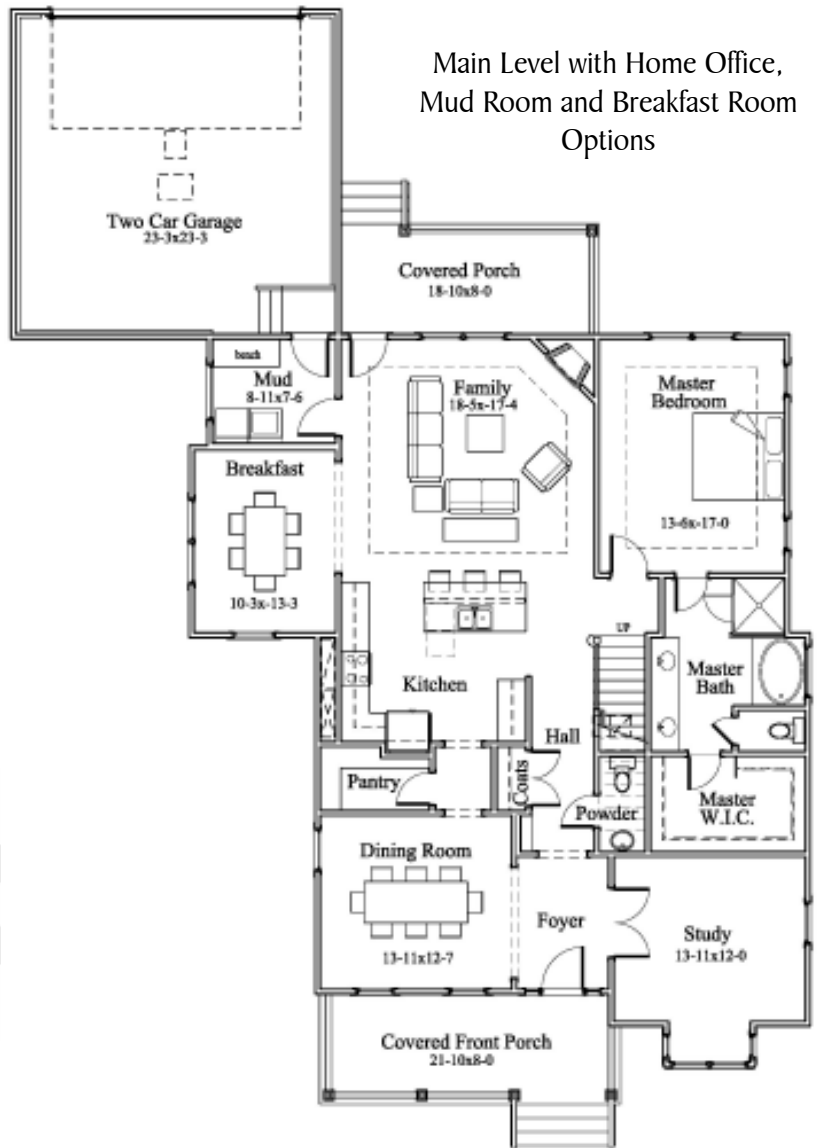


Master Suite on the Main Level

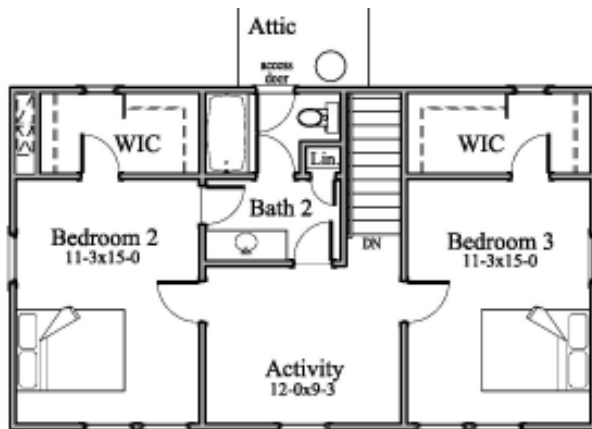
- A Dilworth Collection Home
- Hand Sanded Hardwood flooring
- Kitchen with Island or Peninsula Seating
- Tray Ceiling
- Moen Bath Faucets, GE Appliances
- Tile flooring in all baths
- Granite Countertop in Kitchen
- Extensive Trim and Crown Molding
- Covered Rear Porch
- High Performance Low E Windows
- Fiber Cement Siding with 50 year warranty
- Home Plan with Options to Fit You



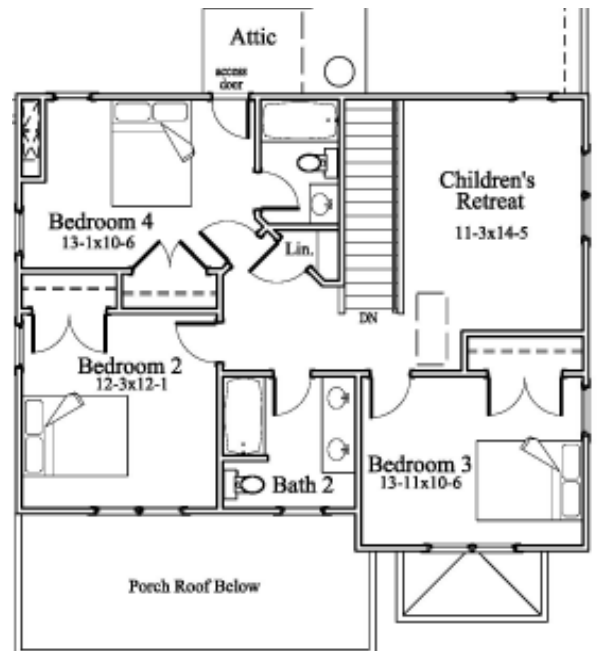
Main Level
3 Bedroom and Easy
Access Laundry Room
and Optional Screen Porch



Main Level with Home Office,
Mud Room and Breakfast Room
Options



Upper Level
3 Bedroom Option



Upper Level
4 Bedroom with Children's
Retreat Option



Evans Coghill Homes

BaxterVillage@evanscoghill.com
803.548.4588