

The Magnolia in Baxter Village

4 or 5 Bedroom / 3 Bath
2900 sf Approx



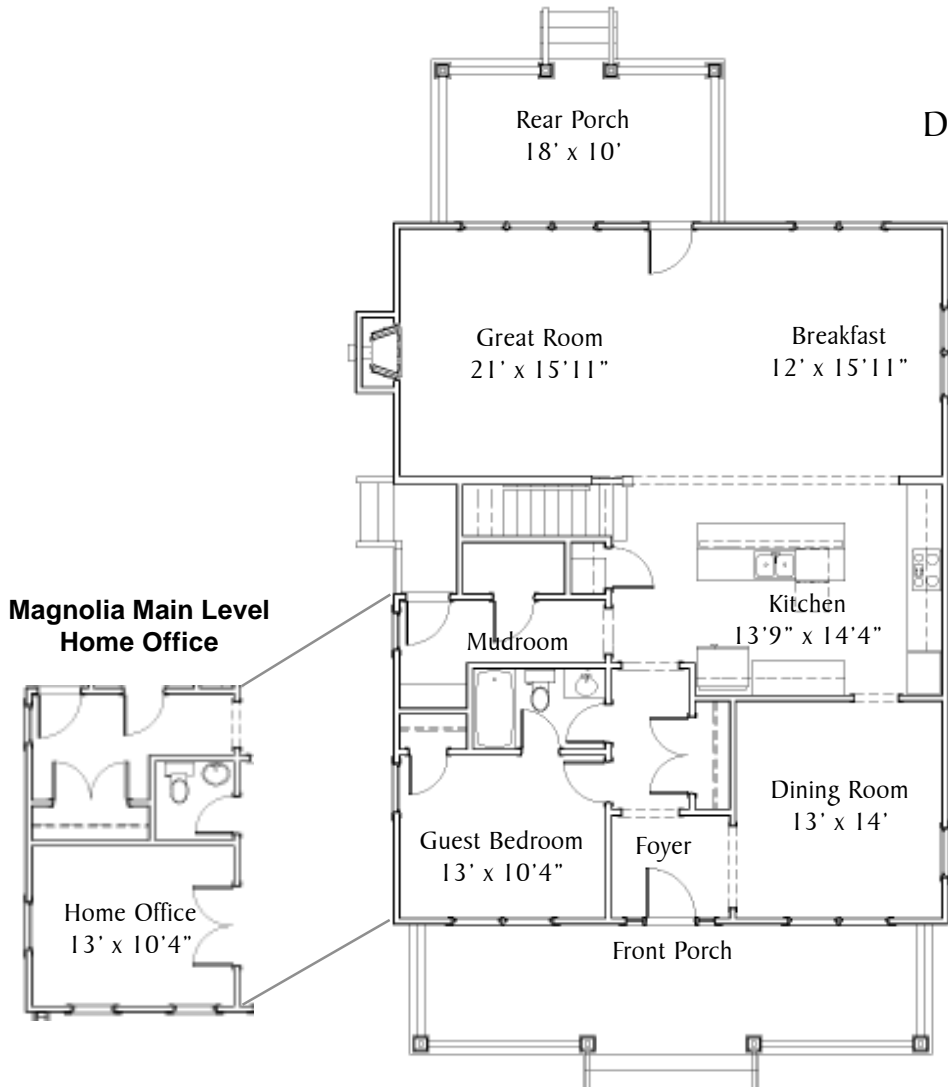
Customize This Home Plan to Suit You

A Dilworth Collection Home

Hand sanded hardwood flooring
Large Kitchen with seating island
Moen Bath Faucets, GE Appliances,
Tile flooring in all baths
Gas Fireplace
Granite Countertop in Kitchen
High Performance Low E Windows
Fiber Cement Siding with 50 year warranty
Security System
Detached Two Car Garage
Can be built on Alley or Village Home Site
Covered Rear Porch

4 or 5 Bedrooms
Main Level Guest Room or Home
Office
Children's Retreat or 5th Bedroom on
Upper Level

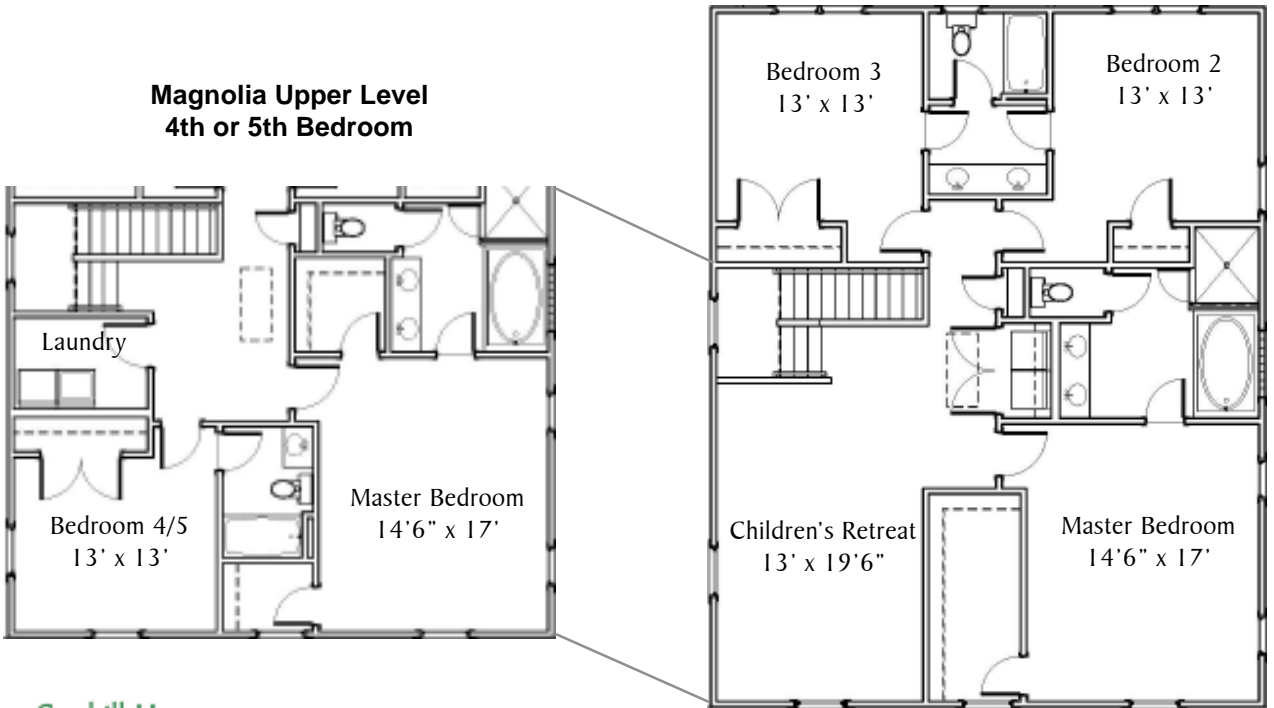
Detached Two Car Garage Included



**Magnolia Main Level
Guest Bedroom**

**Magnolia Main Level
Home Office**

**Magnolia Upper Level
Children's Retreat**



**Magnolia Upper Level
4th or 5th Bedroom**