

## The Bellinger in Baxter Village

4 Bedroom / 3.5 Bath  
3639 sf Approx

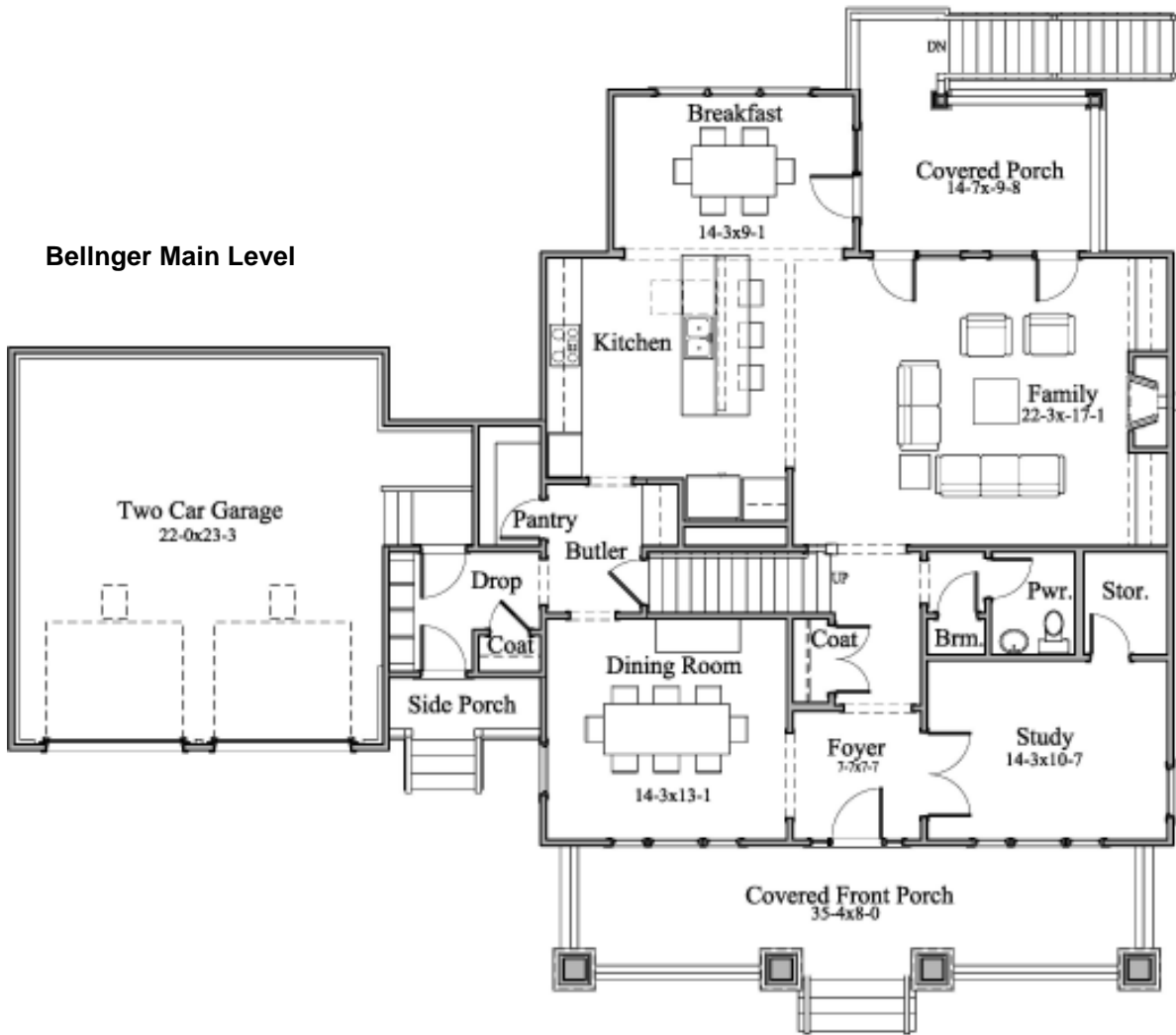


### Master Suite with Cathedral Ceiling A Premier Collection Home

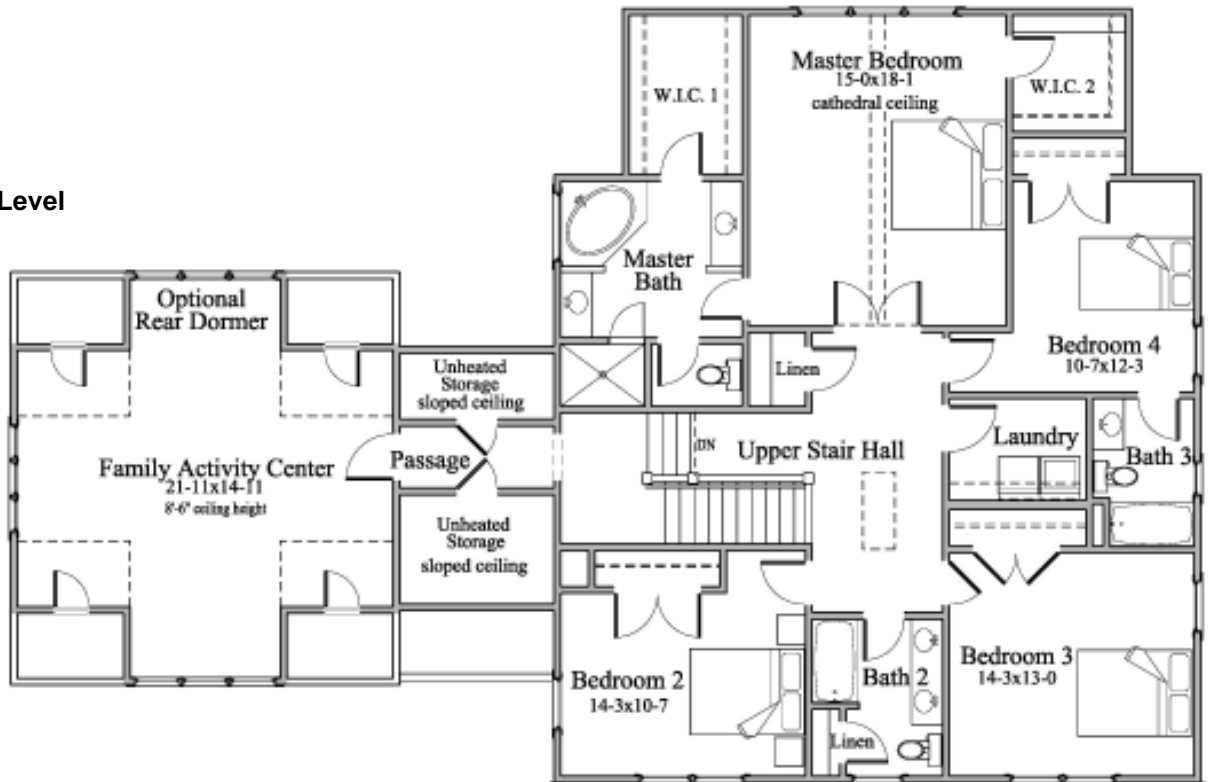
- 10' Ceilings on Main Level
- Inviting Friend's Entry with Mud Room
- Hand Sanded Hardwood Flooring
- Large Kitchen with Island Seating
- Covered Rear Porch
- Built In Cabinetry in Family Room
- Moen Bath Faucets, GE Appliances,
- Tile Flooring in all Baths
- Mud Room with Drop Zone Bench
- Granite Countertop in Kitchen
- High Performance Low E Windows
- Fiber Cement Siding with 50 year warranty
- Private Home Office or Guest Suite off Foyer



**Bellinger Main Level**



**Bellinger Upper Level**



**Evans Coghill Homes**

BaxterVillage@evanscoghill.com  
803.548.4588

*Artist's rendering is for illustrative purposes only. Actual elevations may differ from rendering. Rendering and home plans may show some optional features.*