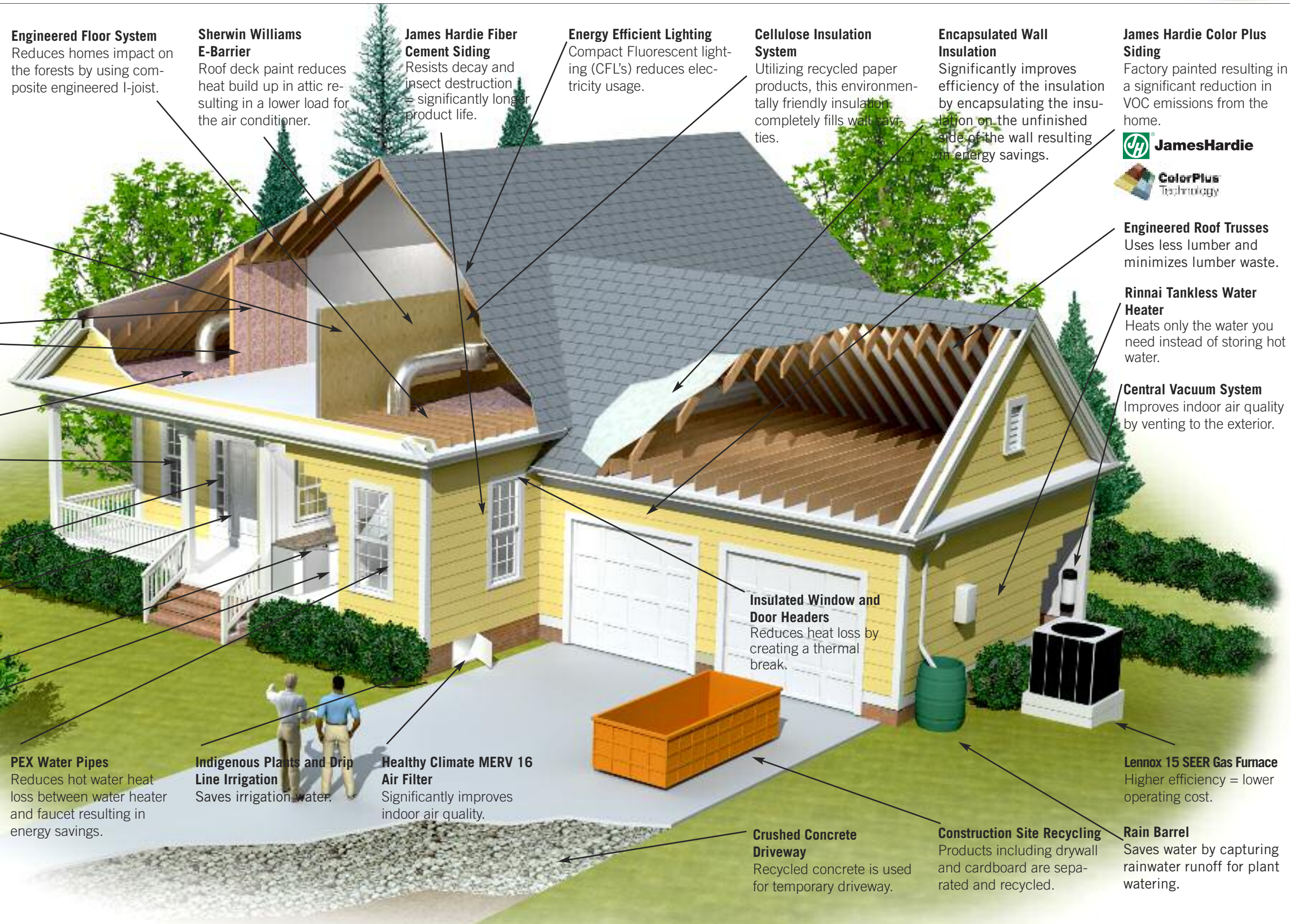




We are proud to announce our new green house plan, as gentle on energy bills as it is on the environment. This reflects our commitment to living more lightly on the earth. Every day, we all make choices that will have an impact on the generations to follow after us. Our green house plan incorporates 26 smart design choices that will help conserve energy as well as our natural resources.



Engineered Floor System
Reduces homes impact on the forests by using composite engineered I-joist.

Sherwin Williams E-Barrier
Roof deck paint reduces heat build up in attic resulting in a lower load for the air conditioner.

James Hardie Fiber Cement Siding
Resists decay and insect destruction = significantly longer product life.

Energy Efficient Lighting
Compact Fluorescent lighting (CFL's) reduces electricity usage.

Cellulose Insulation System
Utilizing recycled paper products, this environmentally friendly insulation completely fills wall cavities.

Encapsulated Wall Insulation
Significantly improves efficiency of the insulation by encapsulating the insulation on the unfinished side of the wall resulting in energy savings.

James Hardie Color Plus Siding
Factory painted resulting in a significant reduction in VOC emissions from the home.



Engineered Roof Trusses
Uses less lumber and minimizes lumber waste.

Rinnai Tankless Water Heater
Heats only the water you need instead of storing hot water.

Central Vacuum System
Improves indoor air quality by venting to the exterior.

Encapsulated Wall Insulation
Significantly improves efficiency of the insulation resulting in energy savings.

Blown in Fiberglass Insulation
Completely fills wall cavities with insulation reducing the amount of energy loss.

House Sealing
All spaces between framing lumber are sealed with caulk or foam reducing air loss and saves energy.

Quiet Higher Capacity Bath Fans
More efficient without the annoying noise of smaller bath fans = less moisture build up.

High Performance Windows
PVC windows with Low E glass reduce the amount of heat transfer while the no rot materials increase the life expectancy.

Therma-Tru Exterior Doors
Fiberglass doors reduce heat loss or gain. Energy Star rated.

Bamboo Flooring
A renewable forest product that makes a beautiful floor.

CaesarStone Countertops
Material includes recycled content resulting in less impact on the environment.

Kitchen Craft Cabinets
A green certified cabinet resulting in lower VOC emissions (better indoor air quality) and less impact on the environment.

PEX Water Pipes
Reduces hot water heat loss between water heater and faucet resulting in energy savings.

Indigenous Plants and Drip Line Irrigation
Saves irrigation water.

Healthy Climate MERV 16 Air Filter
Significantly improves indoor air quality.

Insulated Window and Door Headers
Reduces heat loss by creating a thermal break.

Lennox 15 SEER Gas Furnace
Higher efficiency = lower operating cost.

Crushed Concrete Driveway
Recycled concrete is used for temporary driveway.

Construction Site Recycling
Products including drywall and cardboard are separated and recycled.

Rain Barrel
Saves water by capturing rainwater runoff for plant watering.

Sales Agent:
Steve Risser
704.277-6590

