

A gracious life awaits.

EVANS
COGHILL
HOMES



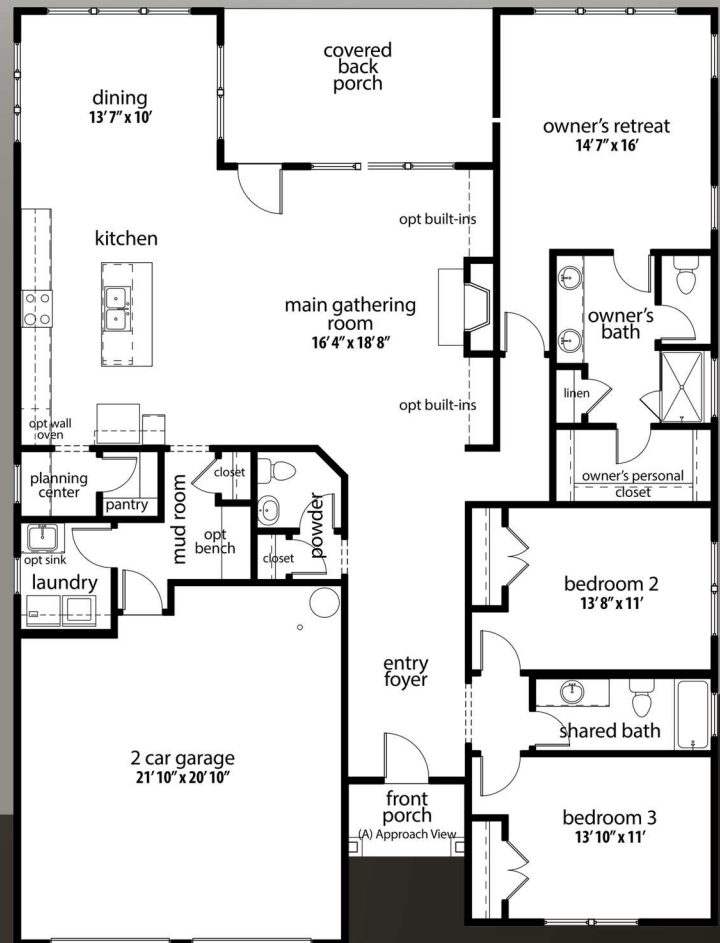
the McDowell A Elevation

6004 Sandy Point Lane
Belmont NC 28012
HOMESITE: 93

\$356,580

MOVE-IN NOW!

- 2193 Square Feet (Per Plans)
- Single Level Living
- 3 Beds / 2.5 Baths
- Hardwoods Throughout Living Space
- Planning Center with Granite Tops
- Covered Rear Porch
- Home Chef Essential Appliance Package
(Gas Range Package)
- Carrara Marmi Quartz Countertops Kitchen
- Granite Countertops in Bath
- Ceramic Tile in All Baths and Laundry
- Gas Fireplace in Main Gathering Room
- Shiplap Wrapped Fireplace w/ Floating Mantel!



MCLEAN

LAKE WYLIE BELMONT, NC



Renderings shown are meant to be representative of the home and may include details, features or colors not included in the actual home. Square footage is based on plans and blue prints. Please consult sales representative for details.



Contact Paul Stanger / 704.899.4995 / pstanger@evanscoghill.com

Marketing by BSI Builder Services

