

A gracious life awaits.



## the Belmont A Elevation

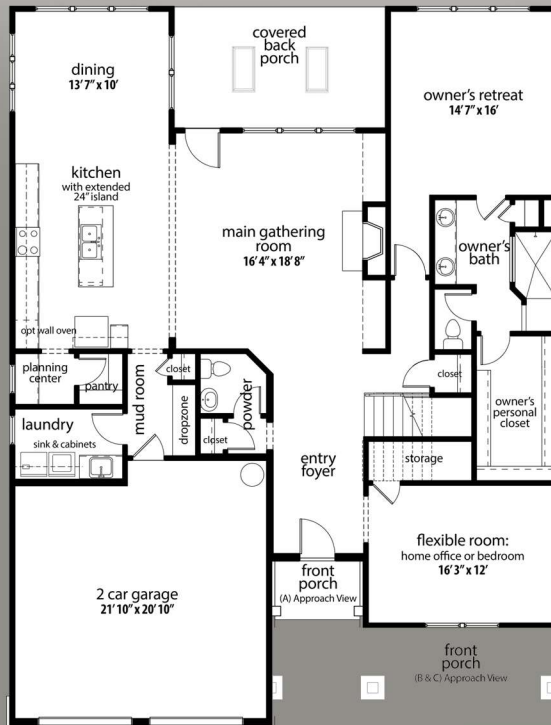
1013 Overlake Drive,  
Belmont NC 28012

HOMESITE: 140  
MLS#3377943

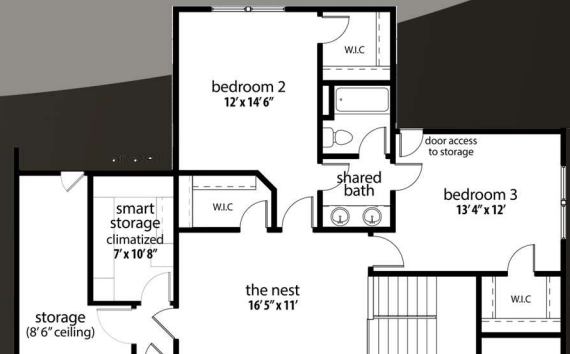
**\$415,000**

**MOVE-IN NOW!**

- 3102 Square Feet (Per Plans)
- 3 Beds/2.5 Baths/Owner's On Main
- Hardwoods and Carpet on Main
- Home Chef Essential Appliance Package (Gas Range Package)
- Extended 24" Island with Quartz Countertop and Upgraded Detailing
- Planning Center + Quartz Counter Tops
- Faux Beam Ceiling in Dining
- Fireplace
- Flexible Room on Main
- Upper Level Nest/Loft
- Upper Level Smart Storage
- Covered Rear Patio (193 sq ft)



Renderings shown are meant to be representative of the home and may include details, features or colors not included in the actual home. Square footage is based on plans and blue prints. Please consult sales representative for details.



Contact Paul Stanger / 704.899.4995 / pstanger@evanscoghill.com

Marketing by BSI Builder Services

